



# TRI MO TRIMOTERM

TRIMOTERM TECHNICAL SPECIFICATION

TRIMOTERM	BRAND, PRODUCT FAMILY, PRODUCT TYPE	RENDER	JOINT	MAX. ACHIAVABLE FIRE RESISTANCE EI (EN 14509)*							U THERMAL TRANSMITTANCE W/M²K (EN 14509)							AIRBORNE SOUND INSULATION Rw (C;Ctr) (db) EN 14509							WATER PERMEABILITY (EN 14509)							WEIGHT (Fe 0,55/0,5) [kg/m²]							REACTION TO FIRE (EN 13501-1)	COMBUSTIBILITY OF INSULANT CORE (EN 13501-1)	WIDTH mm	LENGTH mm												
				PANEL THICKNESS (mm)							PANEL THICKNESS (mm)							PANEL THICKNESS (mm)							PANEL THICKNESS (mm)																													
				60	80	100	120	133	150	172	200	240	50	60	80	100	120	133	150	172	200	240	60	80	100	120	133	150	172	200	240	50	60	80	100	120	133	150					172	200	240	50	60	80	100	120	133	150	172	200
POWER	T	FTV (façade panel with standard joint)			—	—	EI 120		EI 180			0,71 0,60 0,46 0,38 0,32 0,29 0,26 0,23 0,20 0,16							—							30 [-1;-3]							Class A (1200Pa)							n/a	14,4	16,2	18,0	19,8	21,0	22,5	24,5	27,0	30,6	A2-s1, d0	Mineral wool non combustible Class A1 to EN 13501-1	up to 14 m	600-1200	
		FTV HL (façade panel with hidden joint)			—	EI 30	EI 60	EI 120		EI 180	EI 240			0,73 0,61 0,47 0,38 0,32 0,29 0,26 0,23 0,20 n/a							—							Class B (900Pa)							n/a	n/a	15,7	17,5	19,3	21,1	n/a	23,9	25,9	28,4	n/a	600-1100								
		SNV (roof panel)			—	REI 30	REI 120		n/a	REI 120		n/a	0,77 0,66 0,51 0,41 0,35 0,31 0,28 0,25 0,21 0,18							—							Class A (1200Pa)							n/a	14,6	15,8	18,1	20,4	22,6	24,1	26,1	28,6	31,8	36,3	1000									
	S	FTV (façade panel with standard joint)			EI 30	EI 60	EI 120		EI 180			0,77 0,66 0,51 0,41 0,35 0,31 0,28 0,25 0,21 0,18							30 [-2;-3] 31 [-2;-3] 32 [-1;-3]							32 [-1;-2]							Class A (1200Pa)							14,8	16,0	18,3	20,5	22,8	24,3	26,3	28,8	32,0	36,5				600-1200	
		FTV HL (façade panel with hidden joint)			EI 30	EI 60	EI 120		EI 180	EI 240			n/a 0,63 0,48 0,39 0,33 0,30 0,26 0,23 0,20 0,17							30 [-2;-3] 31 [-2;-3] 32 [-1;-3]							32 [-1;-2]							Class A (1200Pa)							n/a	15,0	17,0	19,0	21,0	22,3	24,0	26,2	29,0				33,0	600-1100
PERFORM	R	FTV (façade panel with standard joint)			—	EI 45	EI 120		EI 180			n/a 0,63 0,48 0,39 0,33 0,30 0,26 0,23 0,20 0,17							30 [-2;-3] 31 [-2;-3] 32 [-1;-3]							32 [-1;-2]							Class A (1200Pa)							n/a	15,2	17,2	19,2	21,2	22,5	24,2	26,4	29,2	33,2	A2-s1, d0	Mineral wool non combustible Class A1 to EN 13501-1	up to 14 m	600-1200	
		FTV HL (façade panel with hidden joint)			—	EI 60	EI 120		EI 180	EI 240			n/a 0,64 0,49 0,39 0,33 n/a 0,27 0,23 0,20 n/a							32 [-1;-4] 33 [-1;-4] n/a 33 [-1;-4] n/a							Class B (900Pa)							n/a	n/a	16,3	18,3	20,3	22,3	n/a	25,3	27,6	30,3	n/a	600-1100									
		SNV (roof panel)			—	REI 30	REI 120		n/a	REI 120		n/a	0,75 0,64 0,49 0,40 0,33 0,30 0,27 0,24 0,20 0,17							30 [-2;-3] 31 [-2;-3] 32 [-1;-2]							32 [-1;-3]							Class A (1200Pa)							14,9	16,1	18,5	20,9	23,3	24,9	27,0	29,7	33,0				37,8	1000
	C	FTV (façade panel with standard joint)			EI 30	EI 60	EI 120		EI 180	EI 240			n/a 0,65 0,50 0,40 0,34 n/a 0,27 0,24 0,21 n/a							32 [-1;-4] 33 [-1;-4] n/a 33 [-1;-4] n/a							Class B (900Pa)							n/a	n/a	17,5	19,9	22,3	24,7	n/a	28,3	31,0	34,3	n/a	600-1200									
		FTV HL (façade panel with hidden joint)			EI 30	EI 60	EI 120		EI 180	EI 240			n/a 0,65 0,50 0,40 0,34 n/a 0,27 0,24 0,21 n/a							32 [-1;-4] 33 [-1;-4] n/a 33 [-1;-4] n/a							Class B (900Pa)							n/a	n/a	17,5	19,9	22,3	24,7	n/a	28,3	31,0	34,3	n/a	600-1100									
SNV (roof panel)			—	REI 60	REI 120		n/a	REI 180		n/a	n/a 0,65 0,50 0,40 0,34 n/a 0,27 0,24 0,21 n/a							32 [-1;-4] 33 [-1;-4] n/a 33 [-1;-4] n/a							Class B (900Pa)							n/a	n/a	17,5	19,9	22,3	24,7	n/a	28,3	31,0	34,3	n/a	1000											
	SOUND	R	FTV (façade panel with standard joint)			—	EI 45	EI 120		EI 180			n/a 0,63 0,48 0,39 0,33 0,30 0,26 0,23 0,20 0,17							30 [-2;-3] 31 [-2;-3] 32 [-1;-3]							32 [-1;-2]							n/a							13,4	14,4	16,4	18,4	20,4	22	23,4	25,6	28,4	32,4	Bs1d0	Mineral wool non combustible Class A1 to EN 13501-1	up to 14 m	600&1200
			FTV HL (façade panel with hidden joint)			—	EI 60	EI 120		EI 180	EI 240			n/a 0,63 0,48 0,39 0,33 0,30 0,26 0,23 0,20 0,17							30 [-2;-3] 31 [-2;-3] 32 [-1;-3]							32 [-1;-2]							n/a							13,5	14,5	16,5	18,5	20,5	22,1	23,5	25,8	28,5				32,6
SNV (roof panel)				—	REI 30	REI 120		n/a	REI 120		n/a	n/a 0,64 0,49 0,39 0,33 n/a 0,27 0,23 0,20 n/a							32 [-1;-4] 33 [-1;-4] n/a 33 [-1;-4] n/a							Class B (900Pa)							n/a	n/a	15,5	17,6	19,6	21,6	n/a	24,6	26,8	29,6	n/a	1000										

\*REQUEST FOR FIRE RESISTANCE MUST BE CLEARLY SPECIFIED BY CUSTOMER. EXACT FIRE RATING WITH REGARDS TO SYSTEM, ORIENTATION AND SPAN CAN BE FOUND UNDER THE CERTIFICATION SUBPAGE ON TRIMO WEB PAGE: <https://www.trimo-group.com/en/downloads/certificates-and-data-sheets/certificates>

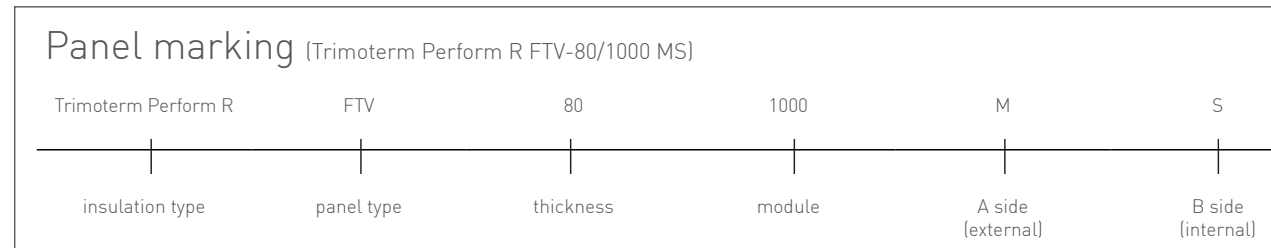
BRAND, PRODUCT FAMILY, PRODUCT TYPE		CERTIFICATES		PROFILE TYPE - EXTERNAL		PROFILE TYPE - INTERNAL	
TRIMOTERM	POWER	T	FTV (façade panel with standard joint)		SMOOTH PROFILE (G)	TRAPEZOID PROFILE	
		T	FTV HL (façade panel with hidden joint)		MICRO-LINED PROFILE (M)	SMOOTH PROFILE (G)	
		S	SNV (roof panel)		MICRO-LINED PROFILE (M3)	S - PROFILE (S)	
	PERFORM	R	S	FTV (façade panel with standard joint)		SMOOTH PROFILE (G)	SMOOTH PROFILE (G)
			R	FTV HL (façade panel with hidden joint)		S - PROFILE (S)	S - PROFILE (S)
			C	SNV (roof panel)		V - PROFILE (V)	MICRO-LINED PROFILE (M2)
SOUND	R	C	FTV (façade panel with standard joint)		V - PROFILE (V)	V - PROFILE (V)	
		R	FTV HL (façade panel with hidden joint)		V - PROFILE (V2)	V - PROFILE (V2)	
		S	SNV (roof panel)		V - PROFILE (V2)	V - PROFILE (V2)	

S, V, V2, G, M, M3, TRAPEZOID

S, V, V2, G, M2

Additional options and variations of "V" profiles are available upon request. Smooth profile (G) can be used either for external or internal side of the panel. To ensure an optimal smooth surface for building side of the panel 0,7 mm steel sheet thickness must be used.

### PANEL MARKING



SPECIFICATION TEXT:  
 Trimoterm Perform R FTV-80/1000 MS  
 external: 0,55 mm SP 25 µm ANTHRACITE  
 internal: 0,50 mm SP 25 µm GREY WHITE

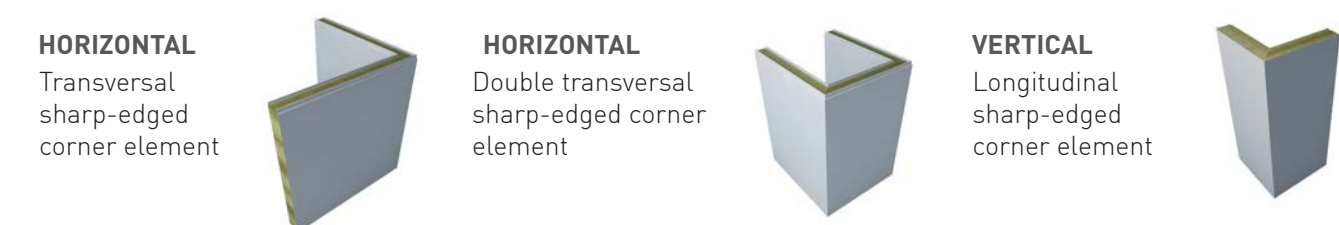
### COLOURS

WHITE (R9010)		SILVER (R9006)	
GREY WHITE (R9002)		DARK SILVER (R9007)	
CREAM (R1015)		TRAFFIC RED (R3020)	
LIGHT GREY (R7035)		MOSS GREEN (R6005)	
AGATE GREY (R7038)		GENTIAN BLUE (R5010)	
TELE GREY 2 (R7046)		ANTHRACITE (R7016)	

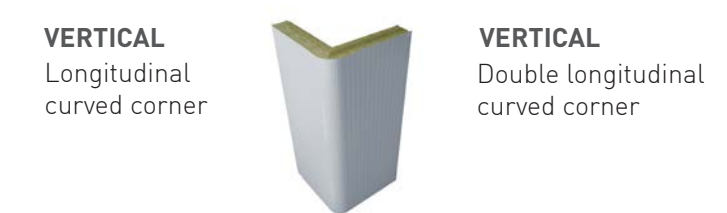
Colours may slightly deviate due to different monitors and prints compared to original colours. Trimoterm can send you a metal swatch upon request.

### CORNER ELEMENTS

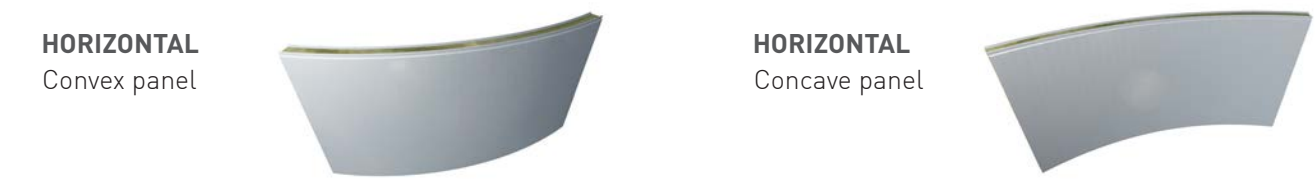
#### SHARP-EDGED CORNER ELEMENTS



#### ROUNDED CORNER ELEMENTS



### SEGMENTED PANELS



# COMPANY PROFILE

Trimo is a one of the leading European companies developing original and complete **building envelope solutions** in the areas of fire-proof **façades** and **roofs**. Located in Trebnje, Slovenia, Trimo sells products and services under its own brand across more than 100 countries worldwide and has a sales network in almost 30 countries. We are a **reliable, trustworthy** global supplier of **innovative**, flexible, energy-efficient and environmentally friendly architectural building solutions.

Our customers are at the heart of our operations as we deeply understand their needs and provide them with the highest level of service and product quality. The list of outstanding and reputable **partners** such as Airbus, London Heathrow, Nestle, Philips, DHL, Porsche, IKEA, Prologis, Mercedes Benz, Coca Cola and many others is a true reflection of our **passion, responsibility** and commitment to our work.



Mitglied des:

**IFBS**

Industrieverband  
für Bausysteme  
im Metallleichtbau



# TRIMO

## TRIMO D.O.O.

PRIJATELJEVA CESTA 12,  
8210 TREBNJE, SLOVENIA

T: +386 (0)7 34 60 200

F: +386 (0)7 34 60 127

TRIMO@TRIMO-GROUP.COM

WWW.TRIMO-GROUP.COM

Trimo Group holds full copyrights on the information and details provided on this media, therefore any unauthorized reproduction and distribution is strictly prohibited. Professional care has been taken to ensure that information/details are accurate, correct and completed and not misleading, however Trimo, including its subsidiaries, does not accept responsibility or liability for errors or information, which is found to be misleading. Information/details on this media are for general purposes only. Use of it is on your own initiative and responsibility for compliance with local laws. Any deviations in details and project solutions are user responsibility. In no event, will we be liable for any loss or damage including without limitation, indirect or consequential loss or damage, or any loss or damage whatsoever arising from loss profits arising out of or in connection with, the use of this media. All information issued by Trimo Group is subject to continuous development and information/details contained on this media are current at date of issue. It is user's responsibility to obtain most up-to-date information from Trimo when information/details are used for project.

The last version of the document is available on [www.trimo-group.com](http://www.trimo-group.com). Latest version of published document in English language prevails over other translated language documents. For information about the delivery of panels see Trimo's General conditions of sale and purchase (<https://trimo-group.com/en/trimo/general-conditions-of-sale>).